



**FLEXIBLE SECURITY
ENCLOSURE
CONSTRUCTION**



MODULEGUARD

CERTIFIED BURGLARY-RESISTANT MODULAR STRONG ROOMS AND VAULT DOORS



KEY FEATURES

- ModuleGuard security enclosures are certified Grade II-IV by ECB+S in accordance with the EN 1143-1 certification for burglary resistance.
- The security enclosures are constructed using modular, lightweight panels.
- The light weight reduces transportation costs, eases installation and allows for placement higher up in buildings where floor loads are limited.
- The modular construction means assembly, disassembly and expansion of a room are both quick and easy.
- The security enclosures can be built into the existing structure of a building and customised to meet the required dimensions.
- Possible applications are: reinforced protection for cash-counting rooms, archives, storerooms (for weapons, pharmaceuticals), ATMs, etc.
- A series of high-security locking options is available.
- The exterior of the enclosure is primed in RAL 7032 and can be finished with decorative panels.

MODULEGUARD

PRODUCT SPECIFICATIONS

Panels

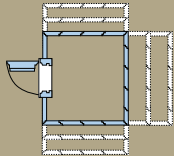
Width (mm)	Thickness (mm)	Height (mm)	Net Weight (kg/m ²) Grade II	Net Weight (kg/m ²) Grade III	Net Weight (kg/m ²) Grade IV
300	75	2240	104	108	200
600	75	2240	137	146	242
750	75	2240	171	182	302
900	75	2240	206	219	363

Doors

Clear Opening Height (mm)	Clear Opening Width (mm)	Thickness (mm)	Net Weight (kg) Grades II & III	Net Weight (kg) Grade IV
2055	750	185	690	780
2055	900	185	830	930
2055	1050	185	970	1090
2055	1200	185	1110	1240
2055	1350	185	1250	1400
2055	1500	185	1380	1550

MINIMUM ROOM MEASUREMENTS

To be certified, the room must be six-sided and meet the minimum dimension requirements below.



Height (External/Internal): 2290/2140mm
 Width (External/Internal): 2445/2295mm
 Depth (External/Internal): 1545/1395mm
 Weight: 3000kg

The specifications given are the minimum size for a certified ModuleGuard enclosure. They are based on a Grade III enclosure and a door with a clear opening width of 900mm. Larger sizes can be made to order. Please note, for extra large dimensions, an additional frame structure may be required for support.

BURGLARY TESTING

ModuleGuard has been approved by ECB•S in accordance with the European EN 1143-1 standard for burglary protection in Grades II, III and IV.

A range of attack tools were used to test ModuleGuard's level of resistance, from basic tools, such as drills and sledgehammers, to more sophisticated thermal and electrical equipment, such as an oxyacetylene torch.

LOCK OPTIONS

KEY LOCK

- Kaba Mauer Praetor 70079 (Class B)

COMBINATION LOCK

- S&G 6731 (Class B)

ELECTRONIC LOCKS

- KelNet-DS (Class B, C, D)
- SafeLock (Class B, C, D)

Authorised dealer

www.chubbsafes.com